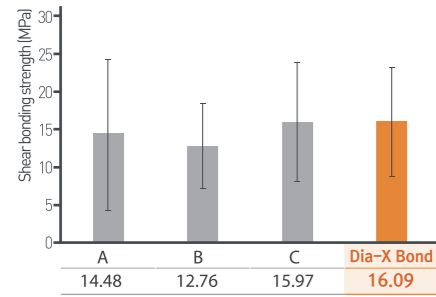


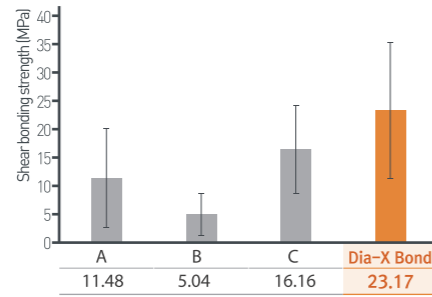
X-traordinary Strength, Remarkably Simple.

# DIA-X BOND™ **Universal**

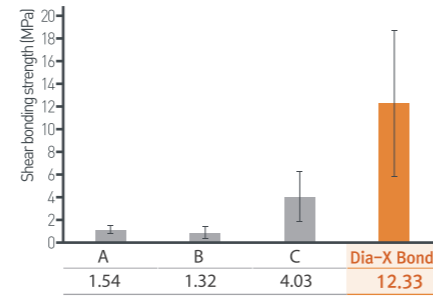
## Indirect Restoration Material Comparison Tests



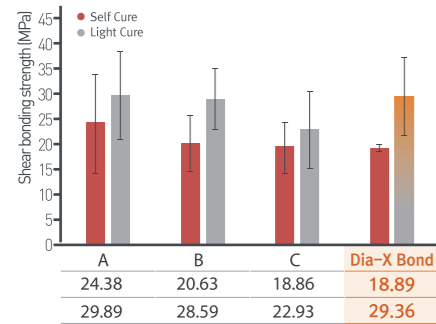
<Zirconia>



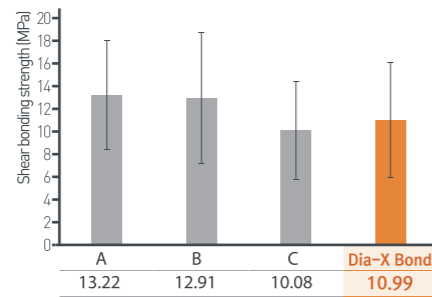
<Metal>



<Ceramic (Porcelain)>



<Light Cure Resin Cement>

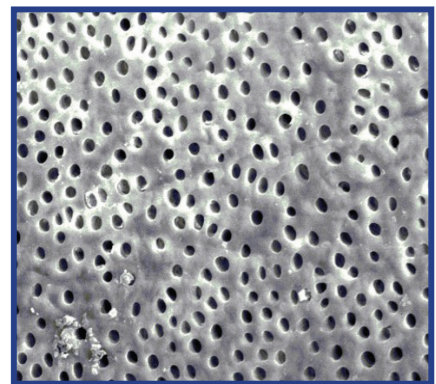


<RMGI>

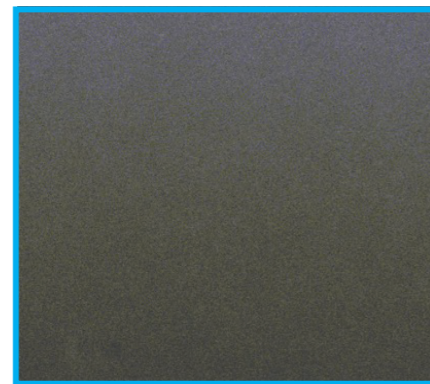
### Conditions :

- Number of specimens : 5 ea
- Light curing with D-Lux+ (high mode 10 secs)
- Resin cement: Self-cure at 6.5 minutes at 37°C
- 24H / 37°C / 0.75 mm/min shear adhesive strength measurement

## Desensitization / Dentin Tubules Occlusion



SEM HV - 20.00kV  
View Field - 144.5 μm  
SEM MAG - 2.00 kx  
WD - 20.07mm  
Det - SE  
Date(m/d/y) - 11/27/20



SEM HV - 20.00kV  
View Field - 144.5 μm  
SEM MAG - 2.00 kx  
WD - 22.40mm  
Det - SE  
Date(m/d/y) - 11/27/20

SEM shows Dia-X Bond Universal's desensitization effectiveness by completely occluding the dentin tubules.

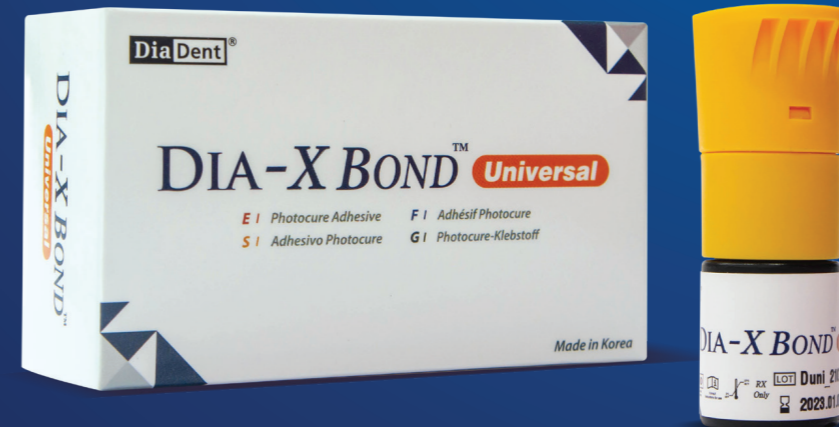
REF | 2023/06/16 | Rev.01

# DIA-X BOND™

## Universal

X-traordinary Strength,  
Remarkably Simple.

- 🦷 All direct restorations:  
Resin-based composite, resin-modified glass ionomers, core build-up, resin cement, etc.
- 🦷 All indirect restorations:  
metal, zirconia, glass ceramics, alumina, etc.
- 🦷 Desensitization/Sealing of Tooth
- 🦷 Intraoral Repair  
(chipped porcelain, additions to direct restorations, etc.)



**Dia Dent**®

**DiaDent Group International**  
16, Osongsaengmyeong 4-ro, Osong-eup, Heungdeok-gu,  
Cheongju-si Chungcheong buk-do, 28161, Korea  
Tel : 82-43-266-2315  
Fax : 82-43-262-8658  
www.diadent.co.kr  
diadent@diadent.co.kr

**DiaDent Group International Inc.**  
11-3871 North Fraser Way, Burnaby,  
B.C., Canada, V5J 5G6  
Tel : 1-604-451-8851  
Fax : 1-604-451-8865  
www.diadent.com  
diadent@diadent.com

**DiaDent Europe B.V.**  
Antennestraat 70, 1322AS  
Almere, the Netherlands  
Tel : 31-36-549-8607  
Fax : 31-36-536-7317  
www.diadenturope.com  
diadent@diadenturope.com

**Dia Dent**®

www.diadent.co.kr



X-traordinary Strength, Remarkably Simple.

# DIA-X BOND™ Universal

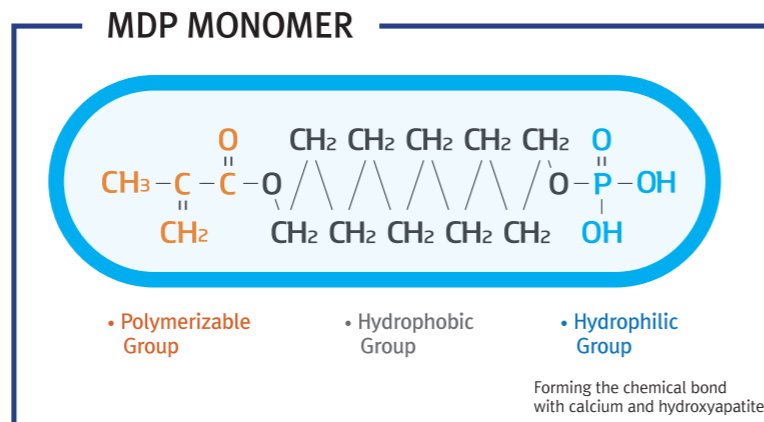
## Advantages of Universal Bond vs 7th Generation Bond



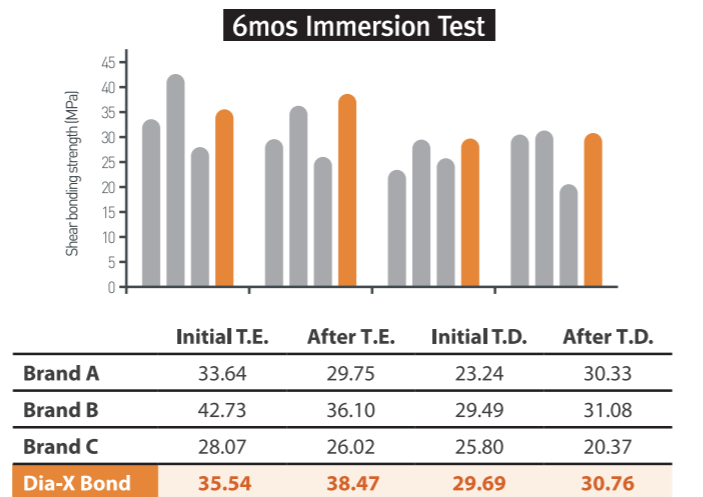
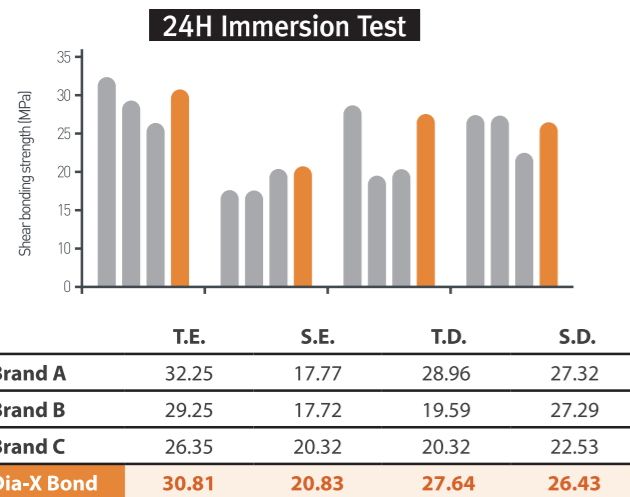
Universal Bond	7th Generation Bond
Versatile: total-, self-, or selective-etching	Self-etching
Stable and hydrophilic	Needs to be thoroughly shaken before use
Self-etching without additional etching material has better adhesion than 5th generation bonding (2-step process)	Weak bond to enamel
Indirect restorations, direct restorations (zirconia/metals, 10-MDP as the primary adhesive functional monomer)	Direct restorations only (enamel/zirconia, ceramics, etc.)
Virtually no post-up sensitivity	Reduce risk of post-op sensitivity
Long shelf life (2 years)	Short shelf life

## 10-MDP Monomer Features

- The 10-MDP monomer component shows excellent bonding strength to metals such as zirconia and alumina
- Excellent overall bonding strength to teeth (dentin, enamel), indirect restorations (metal, zirconia, alumina), and direct restorations (composite resin)
- Excellent chemical bonding with tooth components due to the structure of the hydrophilic group of 10-MDP
- It has low solubility in water and forms excellent chemical bonding with the tooth surface
- 10-MDP monomer has excellent solubility stability compared to other monomers, as it is the most hydrophobic of the adhesive functional monomers



## Direct Restoration Immersion Tests



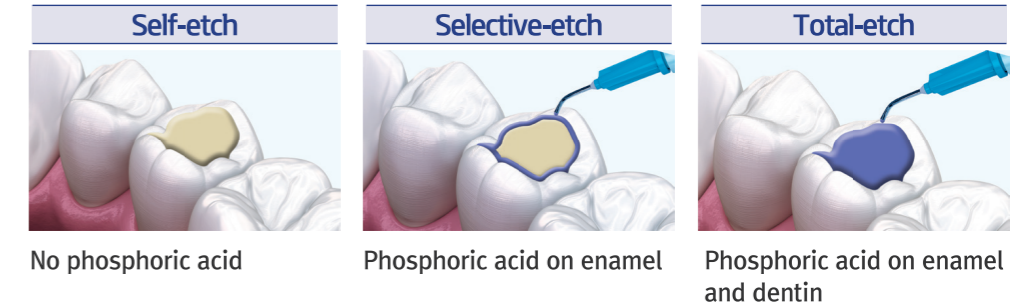
Conditions • Composite resin: DiaFil  
 • 37% Etching Gel: DiaEtch  
 • Light curing with D-Lux+ (high mode 10 secs)

Conditions • Number of specimens: 15 ea  
 • Light curing with D-Lux+ (high mode 10 secs)  
 • 6 months / 37°C / 1mm/min shear adhesion measurement

Abbreviation: T.E. (Total Etching Enamel) / S.E. (Self Etching Enamel) / T.D. (Total Etching Dentin) / S.D. (Self Etching Dentin)

## DIA-X BOND™ Universal

VERSATILITY :  
All Etching Techniques



## Step-by-Step Instructions

### Direct Restoration



### Indirect Restoration

Select the etching technique Self-etch >> Start from Step 02 if etchant is not used

**Selective-etch path:** Step 02 Apply bond & rub for 20 seconds; Step 03 Air dry for 5 seconds (do not desiccate); Step 04 Light cure for at least 10 seconds.

**Total-etch path:** Step 01 Total-etch; Step 05 Apply bond on inlays/onlays; Step 06 Cementation; Step 07 Final restoration.

### Desensitization/Sealing of Tooth



### Intra-Oral Repair

